

# Access and Inclusion Plan 2021 to 2026



## Hard words



This book has some hard words.

The first time we write the hard word we write it in blue.

Then we write what that word means.



You can get help with this book.

Someone can help you read the book.

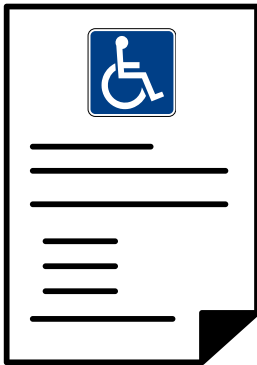
Someone can help you know what the book is about.



You can get someone to help you find more information.



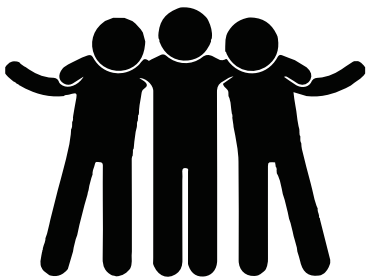
The Western Australian Disability Services Act says all local governments must write and use an [Access and Inclusion Plan](#).



An [Access and Inclusion Plan](#) is a document that states goals and steps to make sure where you live is accessible for everyone.



The Shire of Nannup has an Access and Inclusion Plan that shows how everyone can access services and events and buildings and information, and help and employment.



The Shire of Nannup's Access and Inclusion Plan was made with help from local people and emergency services and health care services.



The Shire of Nannup looks at the Access and Inclusion Plan every year. Changes can be made to the plan at any time.



The Shire of Nannup Chief Executive Officer is David Taylor. He presents the Shire of Nannup Access and Inclusion Plan Easy Read Format.



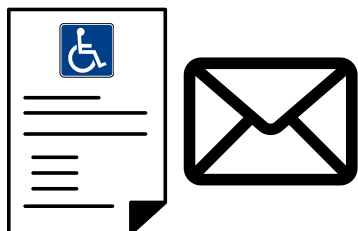
The Shire of Nannup is on the land of the Wardandi and Bibbulmun people.

We thank them for their care of Country.

We respect their elders who came before.

We respect their elders of today.

We will respect their elders who will come later.



The Access and Inclusion Plan can be seen and heard in different ways.

They can be found on our website and at the front counter or through email.



We have paid to use pictures in this book.

We got them from [canva.com](https://canva.com)

# The Shire of Nannup

# 1546

There are 1546 people living here.



Nannup is between the towns of Bridgetown and Busselton and Margaret River and Manjimup.



The Shire has an office with people to help you.  
There is also a library and community activities.



The Shire of Nannup looks after our roads and public buildings.  
They also look after paths and drains and parks.

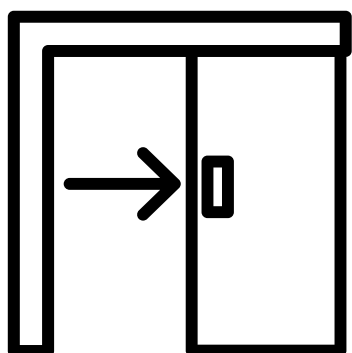
## What we have done



We made the front desk lower at the Shire of Nannup Office.  
Everyone can be seen.



We painted the markings on the main road in Nannup.  
Everyone can see them.



We put in electric doors at the Sports Hall.  
Everyone can enter the building.



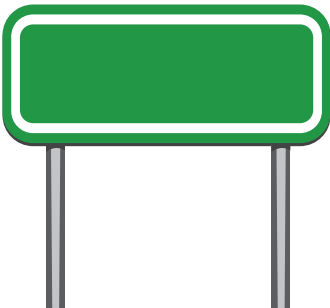
We put in drinking fountains that you can use from a wheelchair.  
They went to the Nannup Skate Park and Marinko Tomas Playground.  
Everyone can have fresh water.



We put bins in our public toilets for needles.  
Everyone can be safe when they throw needles away.



The disabled parking bays are checked and cared for.  
Everyone can park their car.



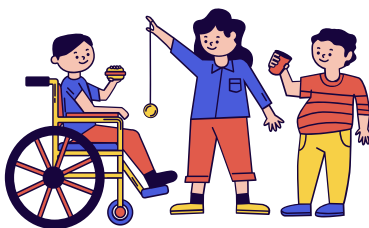
The signs in the Shire of Nannup are checked and cared for.  
Everyone can read the signs.



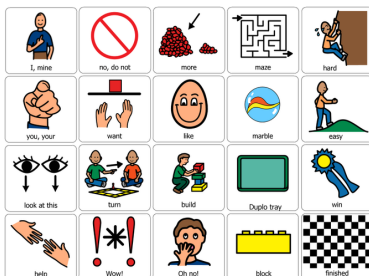
We put in a wash down bay at Foreshore Park.  
Everyone can have clean shoes and wheels.



We changed the toilets to be better for those with a wheelchair or aids.  
Everyone can access a toilet.



The new playground at Marinko Tomas Park can be used by those in a wheelchair or have aids.  
Everyone can play with their friends.



Aided Language Displays were made for the front desk at the Shire of Nannup Office.  
Everyone is able to communicate.

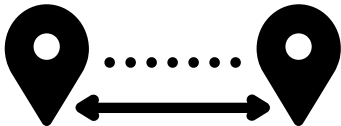


## Why we cannot do more



There is a set amount of money for Access and Inclusion.

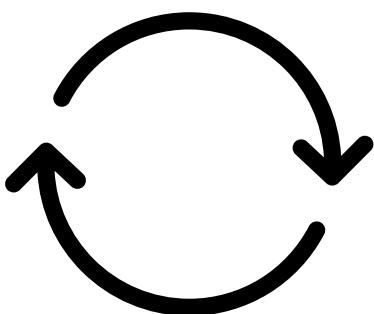
Some changes cost more than the money set aside for the year.



It can be hard to get people to Nannup to do the changes to buildings.



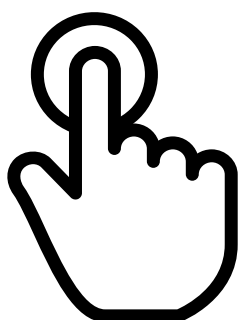
It can be hard to find the items we need to make the changes.



These things will still be a problem in the years to come. We check every year where we can do better.

# What we will do

## Access to Help and Events



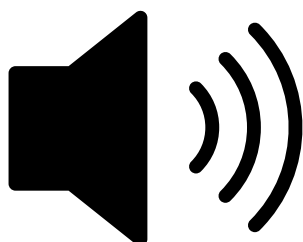
The people who work at the Shire of Nannup can help show you how to get to the [Nannup Community Resource Centre](#).

The Nannup Community Resource Centre can help you access Government information on large touch screens.

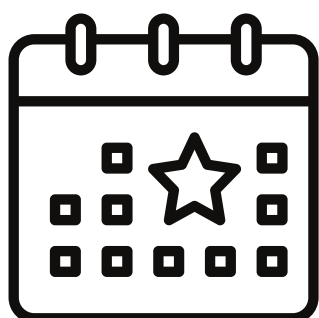


[The Nannup Community Resource Centre](#) can help people access information.

They can help people talk to others and find support services.



The Nannup Library will buy more e-books and music CDs and audio books.



Events run by the Shire of Nannup can be accessed.

Everyone is welcome and can attend.

## Access to Outside Areas and Buildings



The Shire of Nannup cares for our footpaths. They will look into putting in raised markers at crossings on the main road in Nannup.



All new toilet and shower buildings will be built so that everyone can use them.

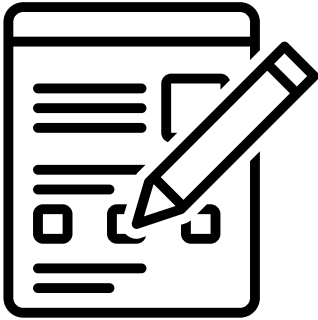


The lines on the parking bays will be painted.



People who work at the Shire of Nannup can tell you where you can use an adult change room.

## Access to Information

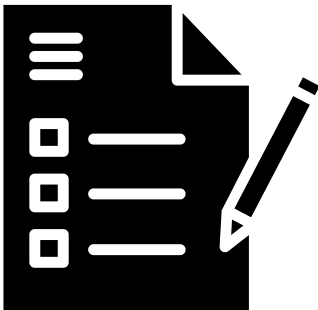


Forms are made so that everyone can read them.

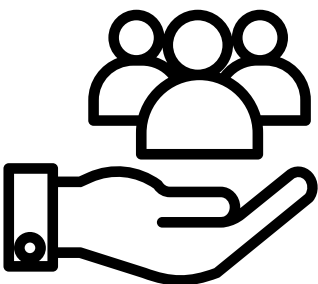
People can ask for help from the Shire of Nannup to fill in any form.



Events with a [Traffic Management Plan](#) will make sure there are parking bays for everyone.

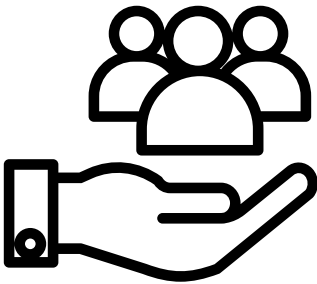


A [Traffic Management Plan](#) tells you where the cars will go when a road is closed or being used.



People can read or hear information in different ways. The people who work at the Shire of Nannup can help you access them.

## Good Service



People who work at the Shire of Nannup can help you get the information that you need.



There will be meetings two times a year to give information to people who live in Nannup.



People that work at the Shire of Nannup have read the Access and Inclusion Plan and can help you if you need to know more about it.

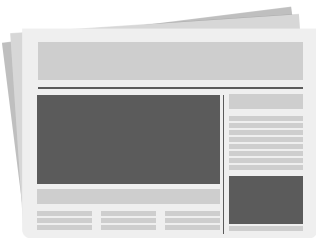


The people who work at the Shire of Nannup will make sure everyone knows what changes are being made with access and inclusion.

# You can tell us what you need to



People who work at the Shire of Nannup can help you fill in the right form if you need to tell us something.

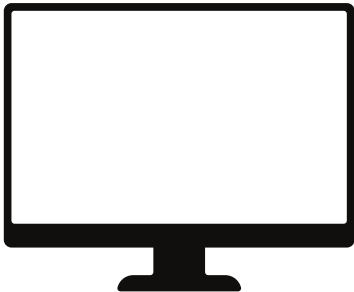


The people who work at the Shire of Nannup will tell everyone that there are other ways to see or hear the information.



The people at the Shire of Nannup will tell everyone when there are meetings that you can speak at.  
Everyone can have a go at speaking at these meetings.

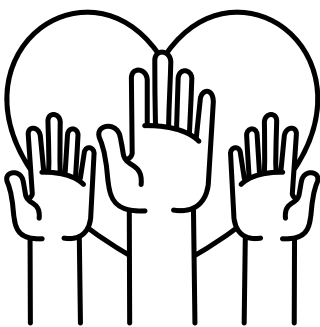
# Having a job with the Shire of Nannup



When there is a job at the Shire of Nannup it will be shared to the Supported Employment Network.



The Shire of Nannup can help you get what you need to work with us.



When the Shire of Nannup needs people to help them they can ask the Disabilities Service Manager to see if anyone wants to help.

# What we used to make the Access and Inclusion Plan



The people at the Shire of Nannup used other reports to make the Access and Inclusion Plan.

- Australian Bureau of Statistics (ABS) 2021 Survey of Disability Aging and Carers
- Australian Bureau of Statistics (ABS) 2021 Census of Population and Housing
- Commonwealth Disability Discrimination Act 1992
- Equal Opportunity Amendment Act Western Australia 1998
- Shire of Nannup Corporate Business Plan 2019 to 2023
- Shire of Nannup Customer Service Charter 2011
- Shire of Nannup Strategic Community Plan 2021 to 2036
- Shire of Nannup Disability Access and Inclusion Plan 2017 to 2020



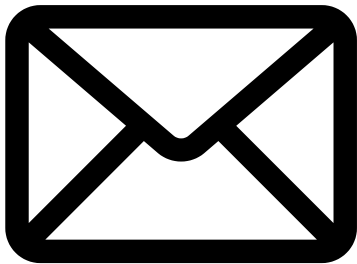
# Contact Us



You can phone us.  
(08) 9756 1018



You can visit us.  
15 Adam Street, Nannup.



You can email us.  
[nannup@nannup.wa.gov.au](mailto:nannup@nannup.wa.gov.au)



You can use our website.  
[www.nannup.wa.gov.au](http://www.nannup.wa.gov.au)