



Nannup Western Australia Geopark Association Incorporated



Acknowledgement of Country

We acknowledge the Traditional Owners of the land, Wardandi
Pibbelmen people, on which we meet today, and honour the
Elders past, present and emerging

Welcome

On behalf of the Nannup WA Geopark members, I would like to thank the Shire of Nannup for the opportunity to present our preference for the Nannup WA Geopark static display location.

Our Vision

Building and sharing knowledge of the Nannup geo-region's unique geological, natural and cultural values, from the ancient past to present day

UNESCO Global Geopark

'single, unified geographical areas where sites and landscapes of international geological significance are managed with a holistic concept of protection, education and sustainable development.

UNESCO, 2022

What is a UNESCO Geopark.

- A UNESCO geopark is quite simply the collation of information over an area, but is not defined by land tenure or titles.
- The set area we are focusing on is the Nannup Shire boundary.
- The layout requirements of the information for the park are broken up into three groups of attributes. UNESCO refer to these as the ABC's



What do UNESCO mean by the ABC's

A - Relates to the ABIOTIC. The geology and climate of the area.

B - Relates to the BIOTIC. Plants and living organisms of the area.

C - Relates to CULTURE. Past and present indigenous culture, as well as post-settlement culture that has shaped the area we see today.

Our process to determine our preferred display location.

- We established locations that could possibly suit the requirements for the static display.
- The location list was assembled with the knowledge that the Nannup WA Geopark team would not have the final say and may not be aware of other issues.
- We understand that the Nannup Shire will approve the final location of the static display and the Nannup WA Geopark static display will be required to meet building approvals and planning requirements.



Why we require in principle support for the location of the static display to help -

- Establish construction costing for grant funding and sponsorship money.
- Ensure we have the right look for the right location also fit the vertical vista and aesthetics of Nannup.
- Location will have an influence on the overall marketing plan.

The Locations

1. Area between Warren Road and cricket nets, near Recreation Centre, what used to be the old fire brigade training area.
2. Area on the southern side of the Emu playground.
3. To the south side of the amphitheatre.
4. Vacant area between the arboretum and the Caravan Park.
5. Tank Seven lookout.

Location Checklist Requirements.

1. Is the location close to toilets.
2. Is the location in the flood zone.
3. Disability access and parking.
4. Visually aware to passing traffic.
5. Security and accessibility all year round.
6. Cost of construction i.e., earth works required and so on.
7. Will we infringe on other organizations.
8. Close to meeting room facilities for school and research groups.

PREFERRED LOCATION

Area between Warren Road and Cricket Nets near Recreation Centre

The area between the main road and the cricket nets is our preferred location. The area fulfills all the requirements on the checklist.

Importantly we would not infringe on any other organizations with this area. The Nannup WA Geopark team believe that we will only enhance the area.



Preferred location checklist comments.

1. Is the location close to toilets. Yes
2. Is the location in the flood zone. No
3. Disability access and parking. Disabled parking and disability access can be accommodated easily
4. Visually aware to passing traffic. Yes
5. Security and accessibility all year round. In public view constantly, discouragement to potential vandalism
6. Cost of construction i.e., earth works required and so on. Level area and the assumption from previous earthworks site is compacted.
7. Will we infringe on other organizations. Not to our knowledge
8. Close to meeting room facilities for school and research Yes



SECOND PREFERRED LOCATION

South Side of EMU Nature Playground

The area on the south side of the EMU nature playground was given a lot of thought however it is believed it will take away space that is used for functions and events.

This area also gets very wet during the winter, potentially raising the cost of construction. The area also has low visibility from the main road.



Second preferred location checklist comments.

1. Is the location close to toilets. Yes
2. Is the location in the flood zone. No
3. Disability access and parking. Disabled parking available but disability access harder for all with limitations.
4. Visually aware to passing traffic. Only partially
5. Security and accessibility all year round. Partially visible adding to the risk to potential vandalism
6. Cost of construction i.e., earth works required and so on. Level area but gets very wet adding to drainage cost. Disability access will require construction.
7. Will we infringe on other organizations. Yes, area used for other events.
8. Close to meeting room facilities for school and research Yes



The South Side of Amphitheatre

The area to the south side of the amphitheatre was a consideration however, this area was not suitable due to the flood zone and the lack of facilities close by.



The South Side of Amphitheatre



Vacant Area between the Arboretum Amphitheatre

Vacant Area between the Arboretum Amphitheatre

The area between the Arboretum and the caravan park was also not suitable due to the same reasons, with the addition of parking as identified as an issue.

Tank Seven

Tank seven was a potential area however the cost to bring facilities and access to the area was high. Other stakeholders would also be required to give approval. For these reasons this area is not suitable.



Tank Seven

ARTIST IMAGE OF THE STATIC DISPLAY AREA

(Please note this is a demonstration design only)

Static display will include:

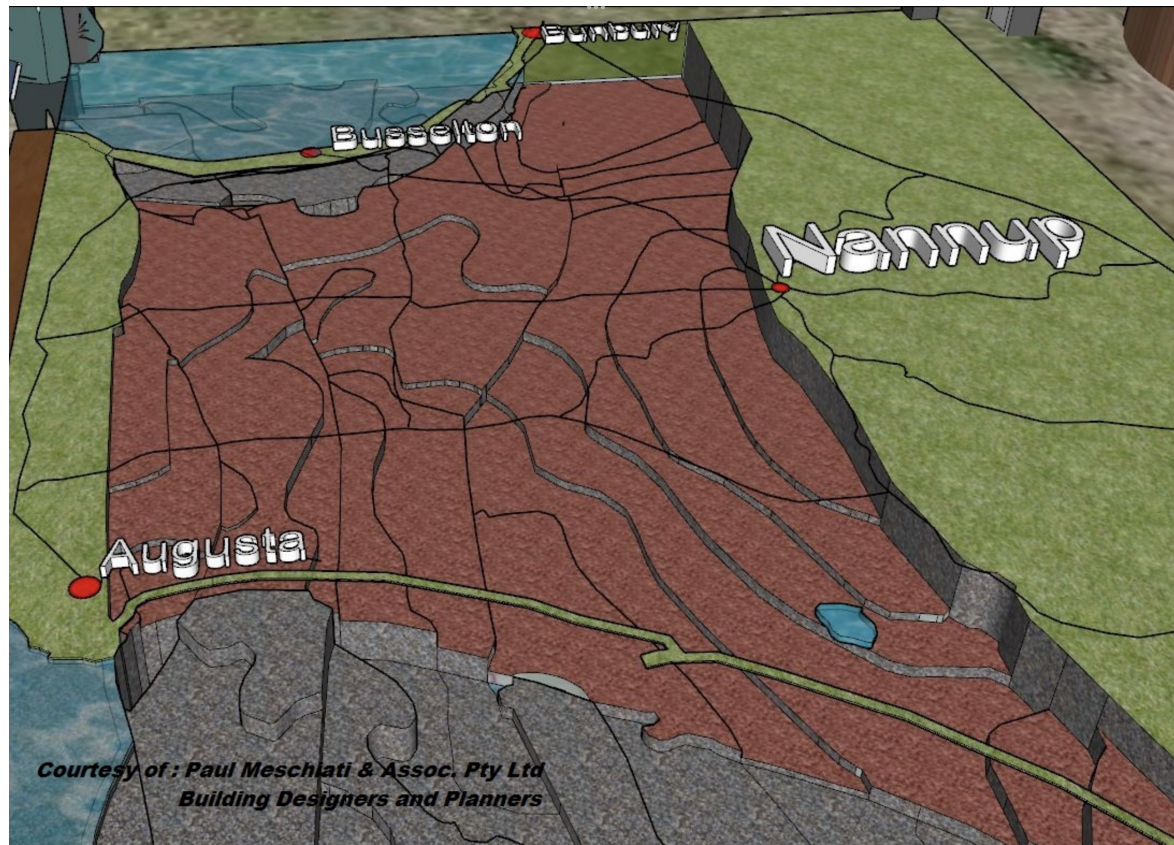
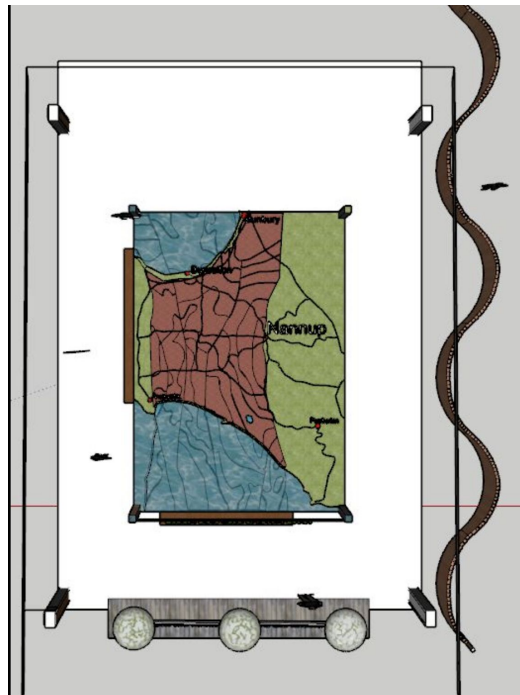
- Geology model
- Earth plate movement
- Timeline fence



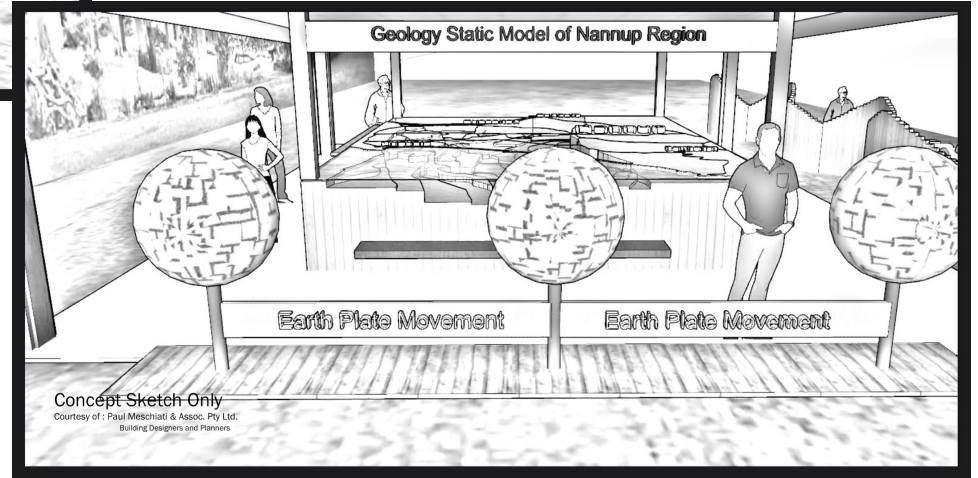
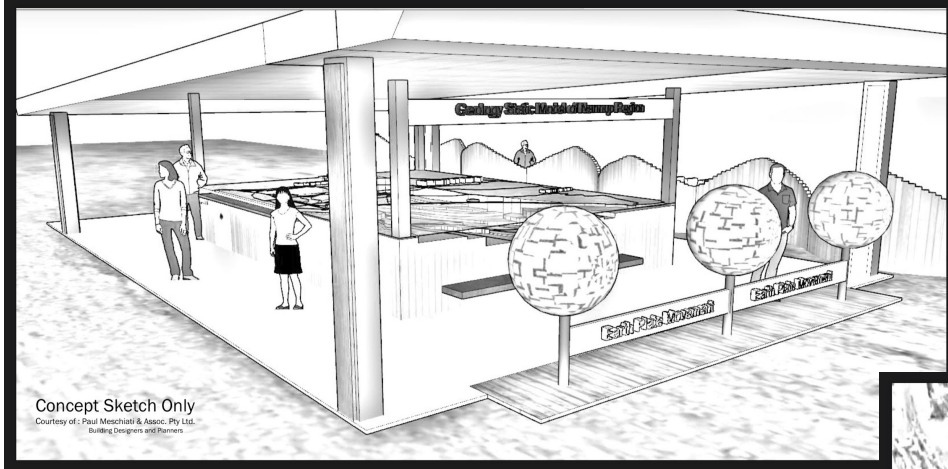
Graphic Representation Only

Courtesy of : Paul Meschiati & Assoc. Pty Ltd.
Building Designers and Planners

ARTIST IMAGE OF THE STATIC DISPLAY AREA



ARTIST IMAGE OF THE STATIC DISPLAY AREA



NANNUP IS THE PERFECT PLACE FOR A GEOPARK

(The static display will contain the A+B+C elements as required for a Geopark.)



- **A - The geology of the area ranges over 2 billion years**
 - Includes lava flows of 170 km running along a 130 million year old valley stretching from Nannup to Bunbury in the north and Black Point in the south
 - 100-300 million year old sediments with up to 9 km vertical movement.
- **B - Large and intact natural areas with significant features**
 - The south-west of WA is one of 25 biodiversity hotspots in the world
 - Over 85% of the Shire of Nannup is in state forest¹
 - 40% is national park containing endemic flora and fauna with Gondwana links
- **C - place of rich cultural heritage**
 - Nannup (stopping place) has been occupied and managed by the Noongar peoples for over 40,000 years.
 - European settlement has also played a part in shaping the area as it is today.

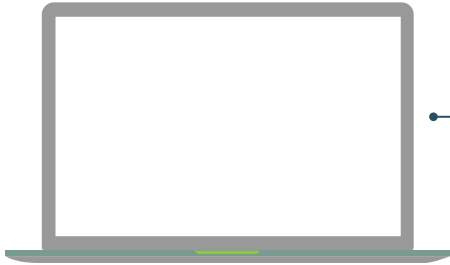
The static display will also be supported by the Geopark App and website.

Geopark App



Contains and enables access to all the information about the Geopark and its features, including 'locate me' mapping to help access trails highlighting geological, biological and cultural aspects

Website



Provides a platform for organisations, groups and individuals to connect with the Geopark with information not included in the App

Static display.

Featuring

1. Timeline sculpture.
2. Global plate movements sculptures.
3. Large sculpture showing current river systems, Geology features, Lava flows, Hydrology components including the Yaragadee and Lake Jasper and much more.

Curated info and on-ground interpretation

Signage, models and other displays to provide information to visitors – no technology needed

WHO'S INVOLVED



Name	Area of Speciality	Location
Steve Winfield	Horticulture, Extensive local knowledge	Nannup
Julia Levinson	Geography, Anthropology, Regional Development	Nannup
Wendy Duncan	Political Science, Business Management	Nannup
Peter Tille	Natural Science, Geology	Bunbury/ Nannup
Crystelle Evangelista	Environmental Biology, Geography, Anthropology, Photography	Nannup
Peter Russell	Geology, Ecology, Carbon Sequestration	Margaret River
Mike Freeman	Geology	Bunbury
Krista Sanderson	Hydrogeology, Geology, Geoscience	Nannup
Paul Meschiati	Architecture	Nannup
Mark White	Business	Nannup
Johnny Perfumo	Ecology	Bunbury
Brendan Murray	Indigenous Cultural, Education	Nannup

ROADMAP FOR THE NANNUP WA GEOPARK



Form a working group with people from various backgrounds and expertise

1

Develop stakeholder information and foster relationships with community, government, schools and private organisations

3

Development of digital content in collaboration with stakeholders, including the Nannup WA Geopark App and website

5

Launch the Nannup Aspiring WA Geopark

7

We are here

2
Develop a vision and objectives and embody these in a Constitution. Commence building our financial model.

2

4
Gather information to support an application to UNESCO as the Nannup WA Aspiring Geopark

4

6
Begin development of on-ground interpretation and signage

6



Any questions?