



Nannup Western Australia Geopark Association Incorporated



Acknowledgement of Country

We acknowledge the Traditional Owners of the land, Wardandi Pibbelmen people, on which we meet today, and honour the Elders past, present and emerging

Welcome

On behalf of the Nannup WA Geopark members, I would like to thank the Shire of Nannup for the opportunity to present and provide an overview on this fantastic project.

Our Vision

Building and sharing knowledge of the Nannup geo-region's unique geological, natural and cultural values, from the ancient past to present day

3

UNESCO Global Geopark

'single, unified geographical areas where sites and landscapes of international geological significance are managed with a holistic concept of protection, education and sustainable development.

UNESCO, 2022

What is a UNESCO Geopark.

- A UNESCO geopark is quite simply the collation of information over an area, but is not defined by land tenure or titles.
- The set area we are focusing on is the Nannup Shire boundary.
- The layout requirements of the information for the park are broken up into three groups of attributes. UNESCO refer to these as the ABC's



What do UNESCO mean by the ABC's

A - Relates to the ABIOTIC. The geology and climate of the area.

B - Relates to the BIOTIC. Plants and living organisms of the area.

C - Relates to CULTURE. Past and present indigenous culture, as well as post-settlement culture that has shaped the area we see today.

4

To Qualify for a UNESCO Geopark

- Must have a geological feature Of international repute.
- Contain a research component.
- Contain educational component.
- Contain trails.
- Coordinate and promote other UNESCO Geoparks.
- Contain elements of each of the three ABC's
- Community lead.
- Show it can be financially independent and provide financial benefits to the wider community.



What are the steps to become a UNESCO Geopark?

- Establish a Geopark.
- Inform UNESCO our intention to become an aspiring UNESCO Geopark.
- Operate for a minimum of 12 months as an aspiring geopark before applying to become a UNESCO Geopark. The process takes a further 12 months.
- Total process from the point of establishing a Geopark is 2 to 4 years.

5

Legal Rights and Requirements

- The only legal requirement is to be incorporated. (Completed)
- We **hold no legal jurisdiction** over anybody or organisation. In the UNESCO constitution it states that UNESCO Geoparks must abide by all laws in the country and area the Geopark operates in.
- Geoparks do not trigger restrictions or limitations of access or activity



Governance

• Constitution

Our constitution has been drawn up based on the model constitution of the WA Department of Consumer Affairs with additional key clauses from the WA Geoparks Association Constitution

• Incorporation

The constitution has been accepted by the Department of Consumer Affairs and the Association was incorporated on 1 June, 2022. The inaugural AGM was held on 23 October, 2022

• ASIC/ABN

The Association has been registered with ASIC and has been allocated an ABN on the Australian Business Register on 21 September 2022

6

OUR OBJECTIVES



Become an active participant in a global Geopark network

- Become a fully accredited UNESCO Geopark
- Build and freely share knowledge
- Develop relationships and links with other Geoparks



Enhance education and knowledge through storytelling

- Use knowledge to encourage protection, conservation and education
- Tell the story of natural features, Indigenous culture and more recent history
- Foster research capability and educational materials



Sustainable economic development for the Nannup region

- Add value to the tourism experience and promote sustainable economic development
- Focus on digital technology and self-serve information sources



NANNUP IS THE PERFECT PLACE FOR A GEOPARK



- **A - The geology of the area ranges over 2 billion years**
 - Includes lava flows of 170 km running along a 130 million year old valley stretching from Nannup to Bunbury in the north and Black Point in the south
 - 100-300 million year old sediments with up to 9 km vertical movement.



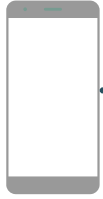
- **B - Large and intact natural areas with significant features**
 - The south-west of WA is one of 25 biodiversity hotspots in the world
 - Over 85% of the Shire of Nannup is in state forest¹
 - 40% is national park containing endemic flora and fauna with Gondwana links



- **C - place of rich cultural heritage**
 - Nannup (stopping place) has been occupied and managed by the Noongar peoples for over 40,000 years.
 - European settlement has also played a part in shaping the area as it is today.

The Nannup WA Geopark Structure will include the following key areas.

Geopark App



Contains and enables access to all the information about the Geopark and its features, including 'locate me' mapping to help access trails highlighting geological, biological and cultural aspects

Website



Provides a platform for organisations, groups and individuals to connect with the Geopark with information not included in the App

Static display.

Featuring

1. Timeline sculpture.
2. Global plate movements sculptures.
3. Large sculpture showing current river systems, Geology features, Lava flows, Hydrology components including the Yaragadee and Lake Jasper and much more.

Curated info and on-ground interpretation

Signage, models and other displays to provide information to visitors – no technology needed

9

ARTIST IMAGE OF THE STATIC DISPLAY AREA

Static display will include:

- Geology model
- Earth plate movement
- Timeline fence

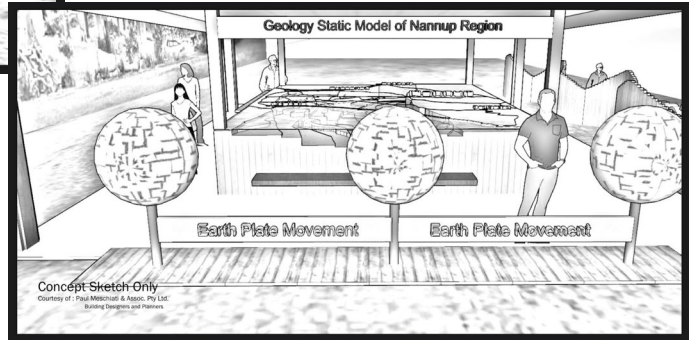
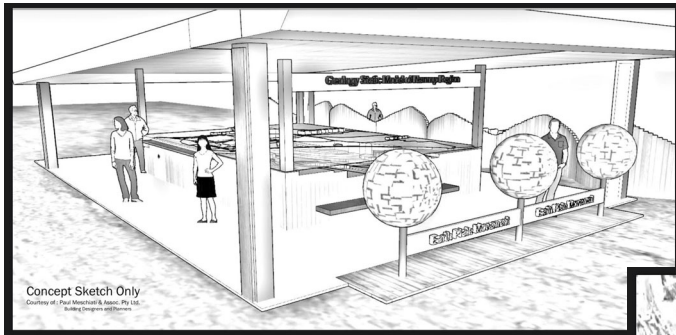
Potential locations

- Tank 7 lookout
- Amphitheater
- Arboretum open space
- Play ground, pump track area

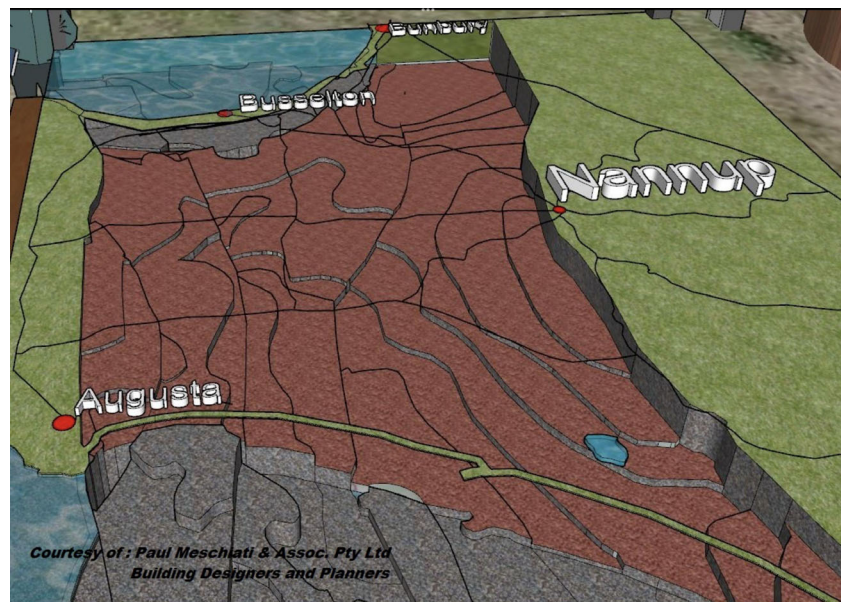
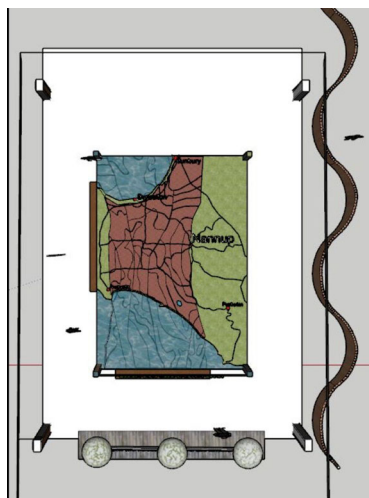


10

ARTIST IMAGE OF THE STATIC DISPLAY AREA



ARTIST IMAGE OF THE STATIC DISPLAY AREA



THE NANNUP GEOPARK APP AND WEBSITE WILL INCLUDE

App



- **Trails to explore and learn**
 - Will use the same technology as the 'Experience Nannup' app
 - Trails will be developed to cover the Abiotic, Biotic and Cultural aspects
 - Trails will be accessible by car, bicycle and walking.
 - App will link to further information on the website

Website

- **Educational material**
 - Information from the trails and the whole Nannup Geopark area will be targeted for education purposes, for primary and high schools.
- **A Research Hub**
 - A place to house information gathered from wide-ranging research, including citizen science programs through to research undertaken by universities and government departments.



13

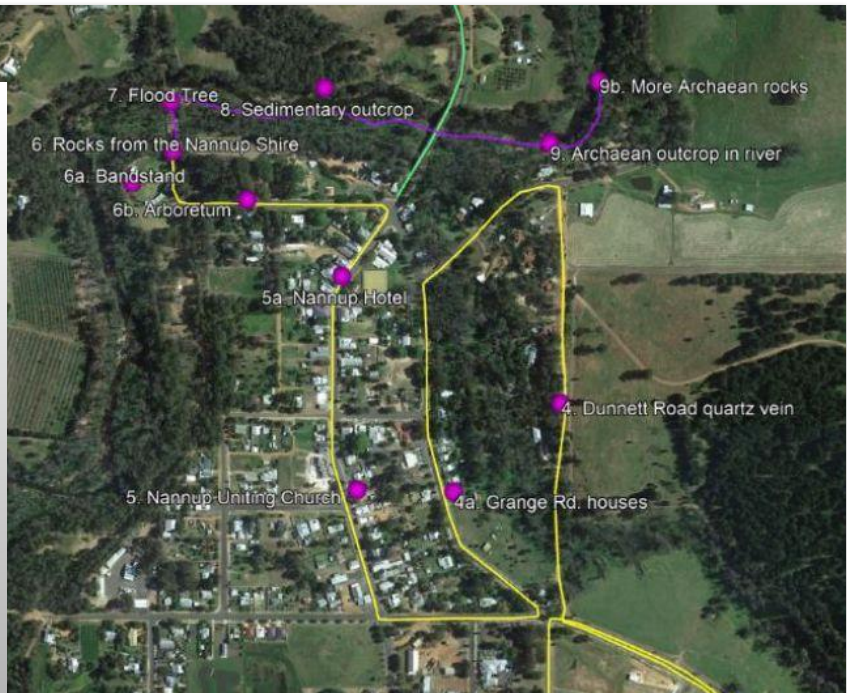
10. Koondil Wildflower Walk

Examples of trails

- Town Geo Trail
- Lake Jasper
- Kondil Wildflower Walk
- Bird Hide Trail
- Carbon Sequestration Trail
- Hydrogeo Trail of Blackwood River

Discussion with Education Institutions

- Nannup District High School
- Hale College
- Servite College
- Universities



14

WHO'S INVOLVED

Name	Area of Speciality	Location
Steve Winfield	Horticulture, Extensive local knowledge	Nannup
Julia Levinson	Geography, Anthropology, Regional Development	Nannup
Wendy Duncan	Political Science, Business Management	Nannup
Peter Tille	Natural Science, Geology	Bunbury/ Nannup
Crystelle Evangelista	Environmental Biology, Geography, Anthropology, Photography	Nannup
Peter Russell	Geology, Ecology, Carbon Sequestration	Margaret River
Mike Freeman	Geology	Bunbury
Krista Sanderson	Hydrogeology, Geology, Geoscience	Nannup
Paul Meschiati	Architecture	Nannup
Mark White	Business	Nannup
Johnny Perfumo	Ecology	Bunbury
Brendan Murray	Indigenous Cultural, Education	Nannup



15

HOW WILL THE GEOPARK BENEFIT THE NANNUP REGION?



- Grow sustainable financial benefits to the community and enhance local economic development through Geotourism along with establishing a education hub.
- Enhance local community knowledge through education and knowledge sharing, building a sense of ownership and pride for the natural and cultural aspects of the Nannup region
- Extend this knowledge to the broader public, bringing wider appreciation to the Nannup region

16

ROADMAP FOR THE NANNUP WA GEOPARK



1 Form a working group with people from various backgrounds and expertise

3 Develop stakeholder information and foster relationships with community, government, schools and private organisations

5 Development of digital content in collaboration with stakeholders, including the Nannup WA Geopark App and website

7 Launch the Nannup Aspiring WA Geopark



We are here



2 Develop a vision and objectives and embody these in a Constitution. Commence building our financial model.

4 Gather information to support an application to UNESCO as the Nannup WA Aspiring Geopark

6 Begin development of on-ground interpretation and signage

SUPPORT FOR THE NANNUP GEOPARK



Koomal Dreaming strongly supports Nannup's Geopark aspirations as it upholds core values around historical and cultural links to the region's geography. It provides Noongar people, as its original inhabitants, ongoing opportunities to showcase unique landscapes to visitors from near and far. Our endorsement of this project under UNESCO's banner is also about encouraging sustainable practice so that future generations may continue to appreciate this precious region"

Josh Whiteland, Wadandi Cultural Custodian





Any questions?